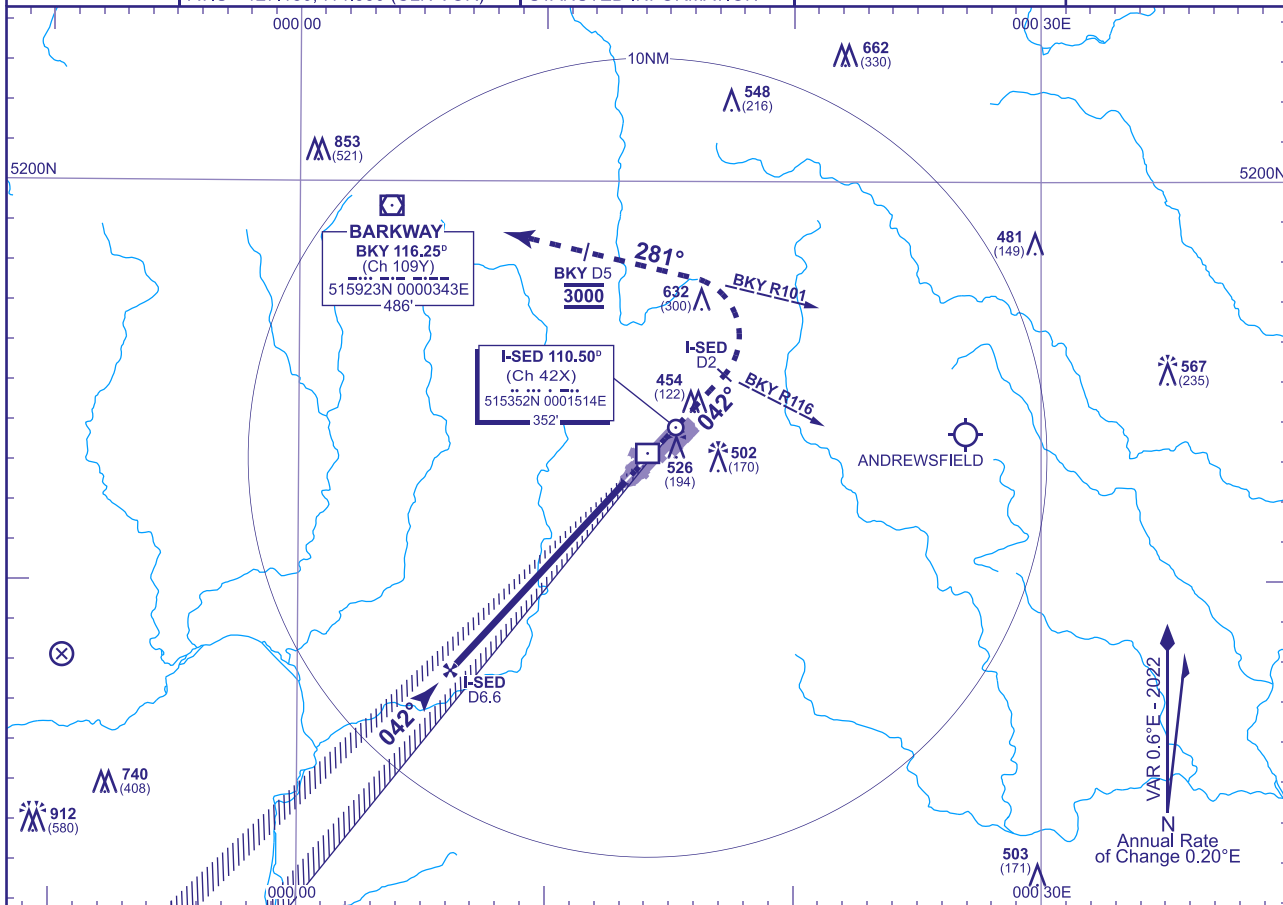
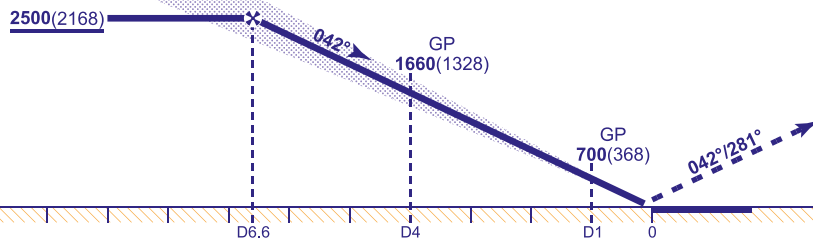


(ACFT CAT A,B,C,D)



DME I-SED	6	5	4	3	2	1
ALT(HGT)	2300(1968)	1980(1648)	1660(1328)	1340(1008)	1020(688)	700(368)

RDH 53



Climb straight ahead **not above 3000**.
At I-S-ED DME 2 (VOR BKY R116)
turn left to establish on VOR BKY R101
(QDM 281°). Cross BKY DME 5 at
3000* then continue to **BKY VOR** at
3000 or as directed.
* Missed approach climb gradient of
4.9% may be required to ensure CAS
containment.

Aircraft Category		A	B	C	D	Rate of descent	G/S KT	160	140	120	100	80
OCA (OCH)	CAT I	482(150)	495(163)	509(177)	525(193)		FT/MIN	850	740	640	530	420
	CAT II	388(56)	400(68)	413(81)	430(98)							
VM(C)OCA (OCH AAL)	Total Area	900(552)	900(552)	1030(682)	1040(692)							

AIRCRAFT UNABLE TO RECEIVE DME I-SED
Advise ATC. Radar range will be provided at 4NM inbound.

AIRCRAFT UNABLE TO RECEIVE VOR DME BKY
Advise ATC. Radar direction will be passed for missed approach procedure.

NOTE 1 For initial approaches see AD 2-EGSS-7-16.
2 MAX 185KIAS for MAP until established on BKY R101.

CHANGE (1/24): STANSTED AD FOOTPRINT UPDATED.

AERO INFO DATE 14 NOV 23

AD 2-EGSS-8-1